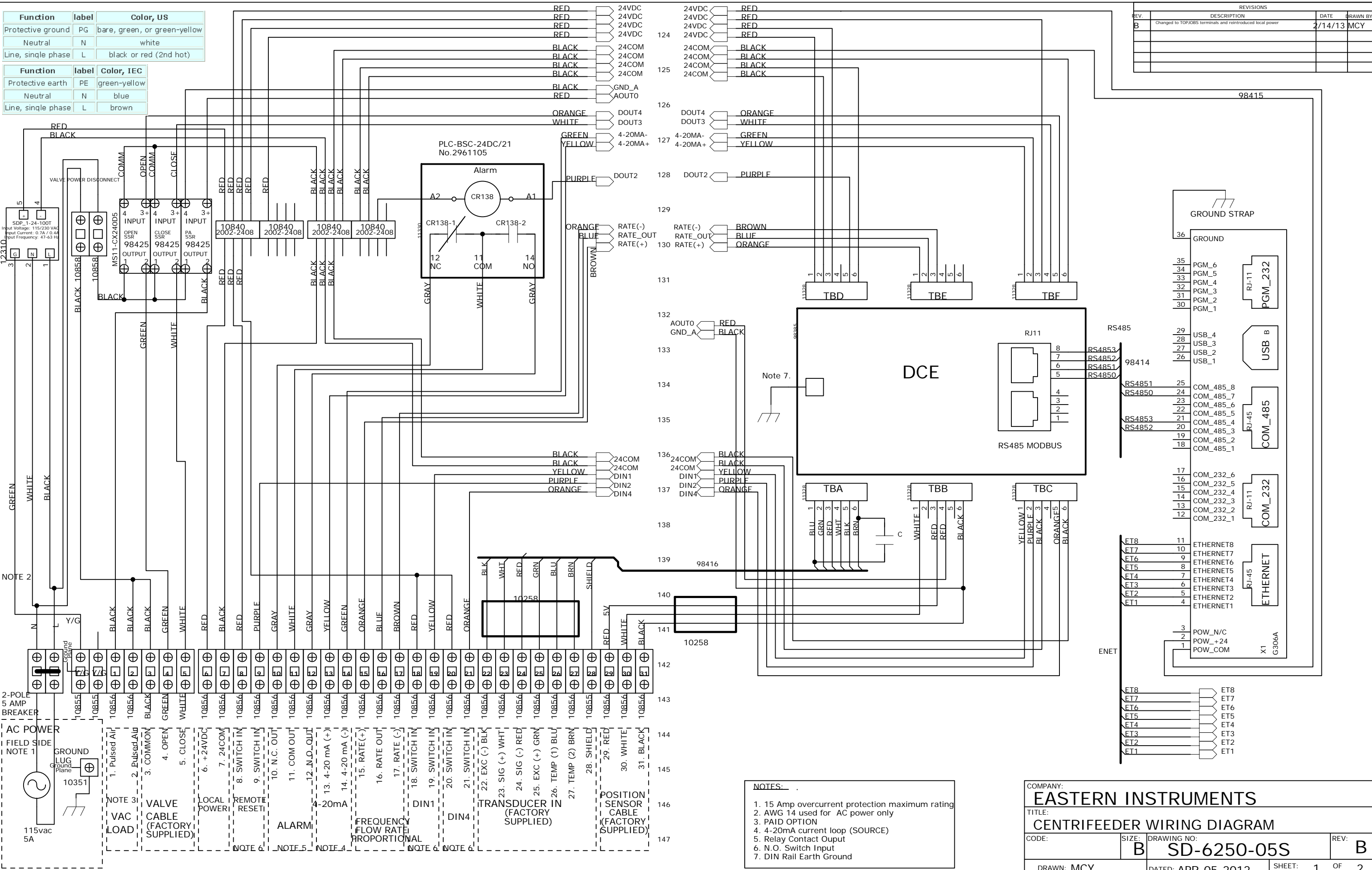


Function	label	Color, US
Protective ground	PG	bare, green, or green-yellow
Neutral	N	white
Line, single phase	L	black or red (2nd hot)

Function	label	Color, IEC
Protective earth	PE	green-yellow
Neutral	N	blue
Line, single phase	L	brown

REV.	DESCRIPTION	DATE	DRAWN BY
B	Changed to TOPJOB5 terminals and reintroduced local power	2/14/13	MCY



- NOTES:**
- 15 Amp overcurrent protection maximum rating
 - AWG 14 used for AC power only
 - PAID OPTION
 - 4-20mA current loop (SOURCE)
 - Relay Contact Output
 - N.O. Switch Input
 - DIN Rail Earth Ground

COMPANY: **EASTERN INSTRUMENTS**

TITLE: **CENTRIFEEDER WIRING DIAGRAM**

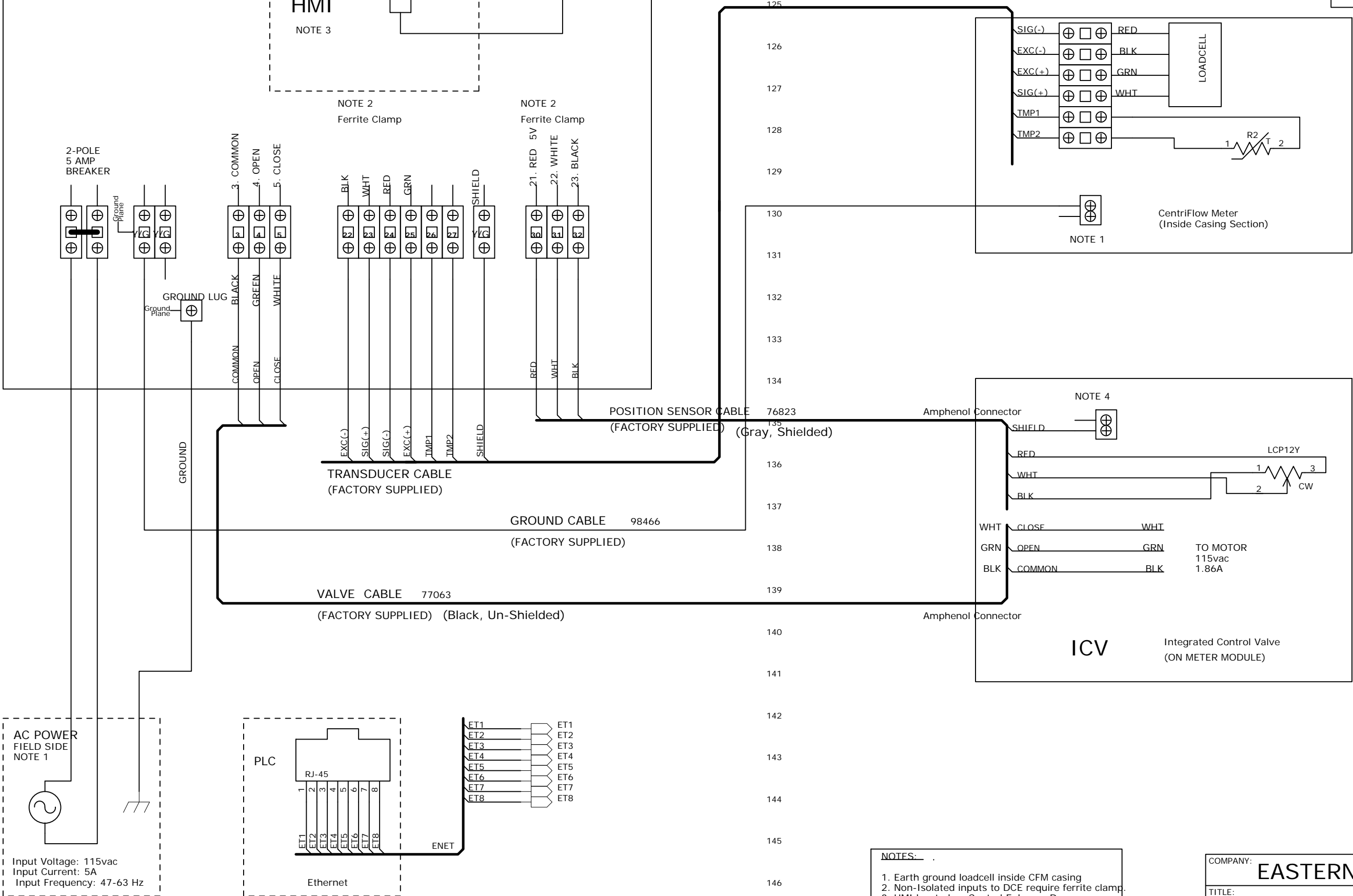
CODE: _____ SIZE: **B** DRAWING NO: **SD-6250-05S** REV: **B**

DRAWN: MCY DATED: APR-05-2012 SHEET: 1 OF 2

CENTRIFEEDER WIRING DIAGRAM

REVISION RECORD			
ITR	ECO NO:	APPROVED:	DATE:

SD-6250-05S



NOTES:

1. Earth ground loadcell inside CFM casing
2. Non-Isolated inputs to DCE require ferrite clamp.
3. HMI located on Control Enclosure Door
4. Earth ground inside ICV casing

COMPANY: EASTERN INSTRUMENTS			
TITLE: CENTRIFEEDER CUSTOMER WIRING			
CODE:	SIZE: B	DRAWING NO: SD-6250-05S	REV: B
DRAWN: MCY	DATED: APR-05-2012	SHEET: 2 OF 2	